

RUBIACEAE



HOANG VAN SAM



Rubiaceae (euasterids 1)

660 genera
11.000 species

World-wide distribution but predominantly
tropical



Uses

- Dyes and tannins
Uncaria, Morinda
- Timber
Nauclea, Anthocephallus
- Ornamentals
Ixora, Gardenia, Mussaenda
- Medicinal
Quinine (*Cinchona*)
Coffee (*Coffea*)

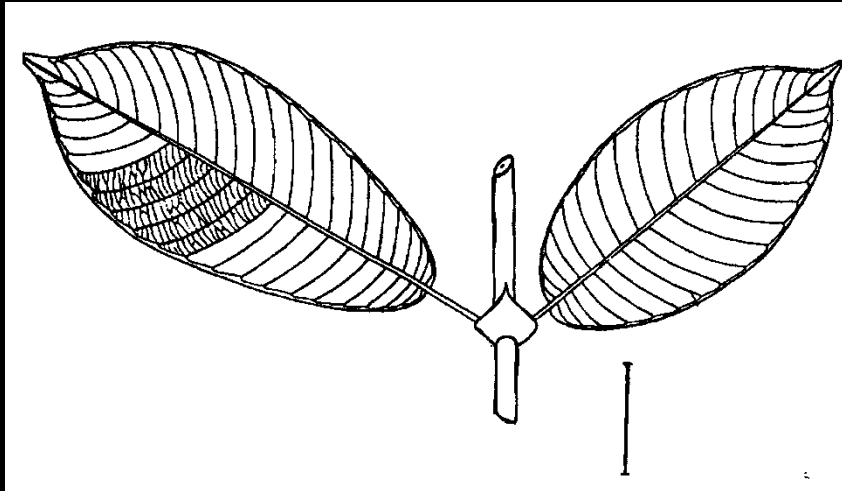


NOTE:

Coffee ranks as one of the world's major commodity crops and is the major export product of some countries.

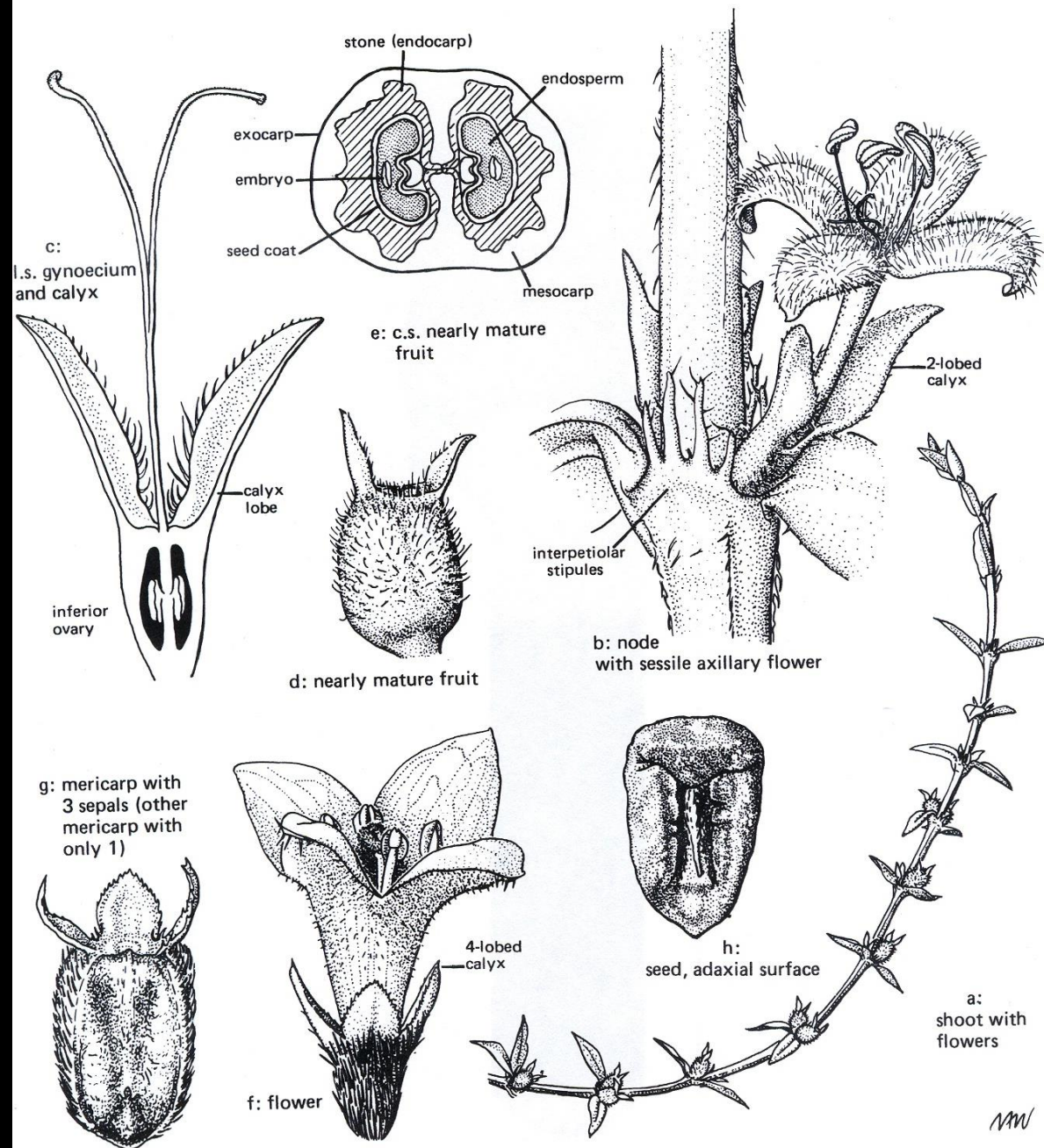
Family characters

- Leaves opposite, rarely whorled



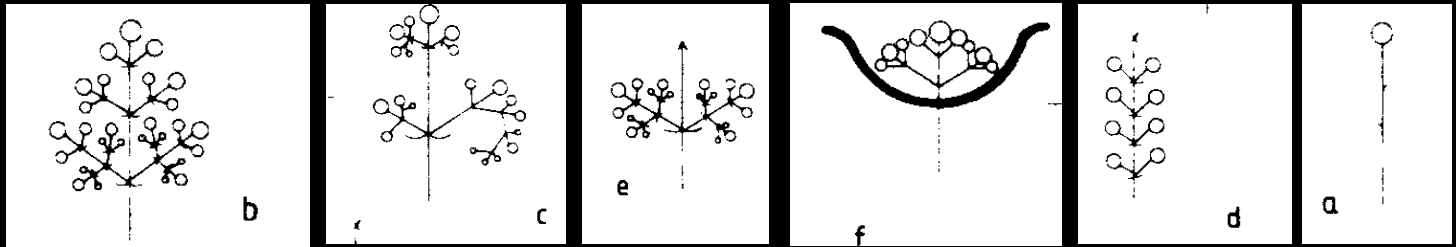
- Stipules usually interpetiolar





Family characters

- Inflorescences very variable, including panicles, cymes, spikes, heads, or even solitary flowers

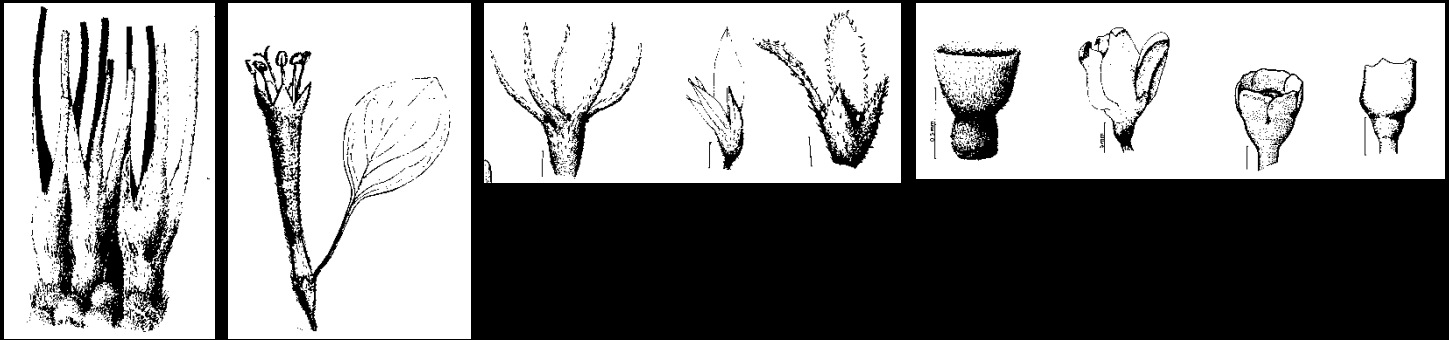


- Sometimes flower like inflorescences

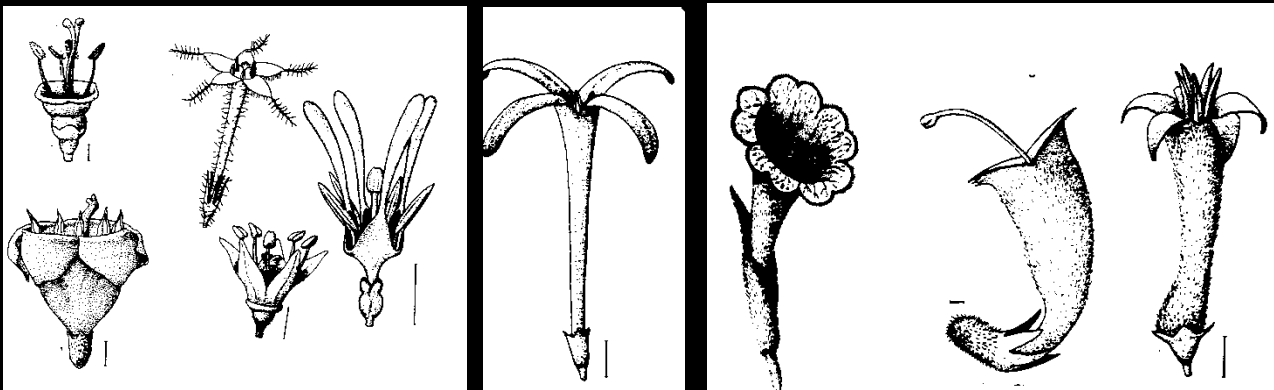


Family characters

- Flowers with 4-5 lobed, variably shaped calyx, often persistent in fruit

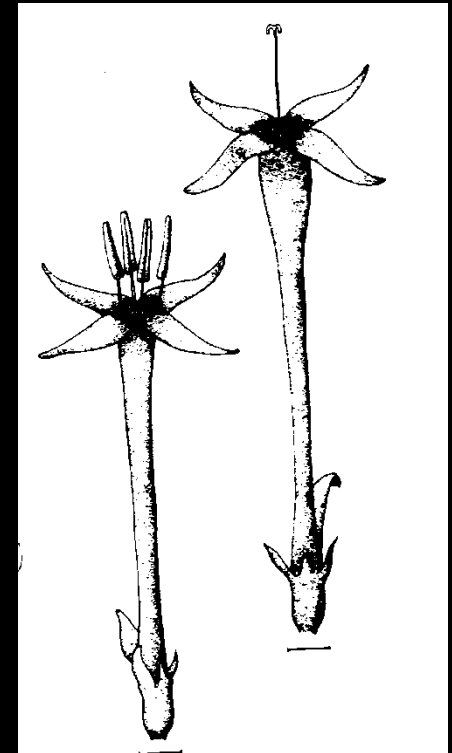


- Corolla 4-5(-10)-lobed, often forming a long tube



Family characters

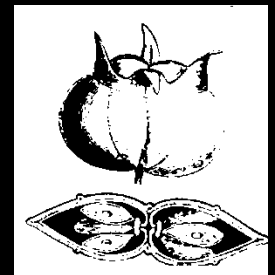
- Flowers usually with disc
- Stamens 4-5(-10) placed on the corolla
- Ovary inferior (rarely half-superior)
- Ovary (1-)2(-many) locular, with 1 style
- Style entire or 2-lobed



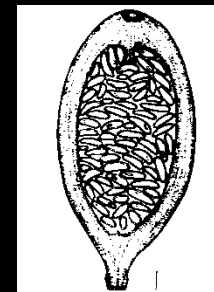
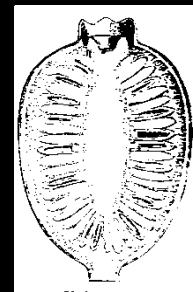
Family characters

- Fruit a drupe, berry or capsule

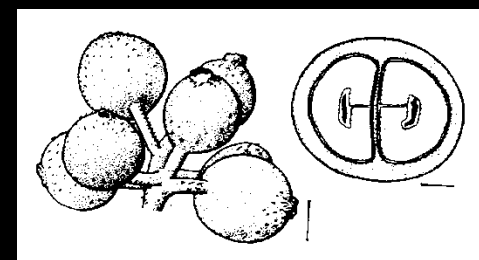
Dry fruits



Berries



Drupes



Special life form



**Ant-inhabited tubers;
symbiotic myrmicophily**